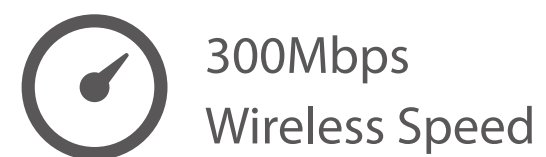




# 300Mbps Wireless N Nano Router

Wi-Fi in Your Pocket

TL-WR802N



# Highlights

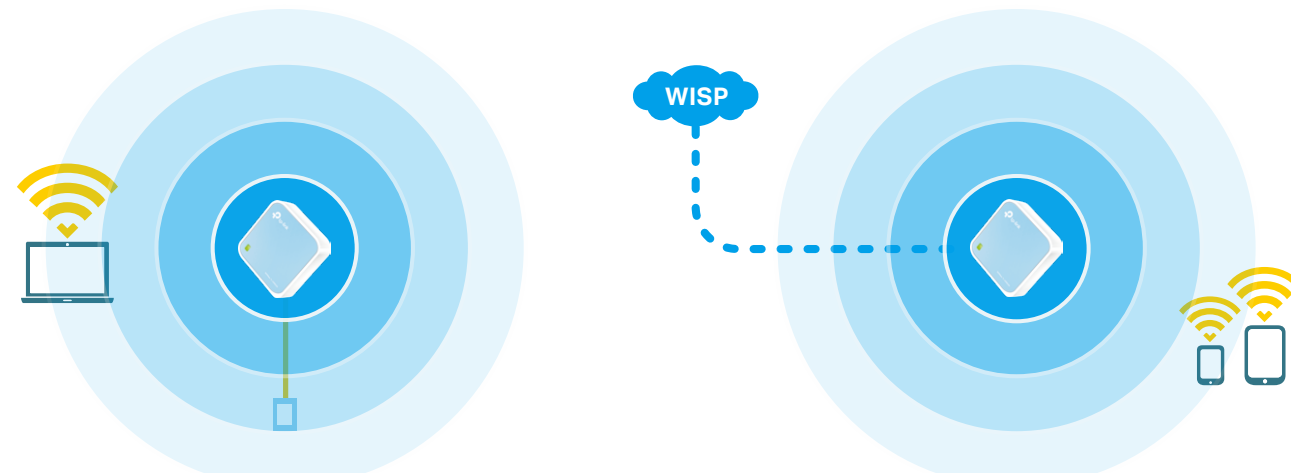
## Multiple Operating Modes - Ideal for Home and Travel Use

### On the Road

- Wireless Router Mode: create your own private Wi-Fi network via Ethernet connection
- Hotspot Router Mode: turn existing Wi-Fi into a private wireless network

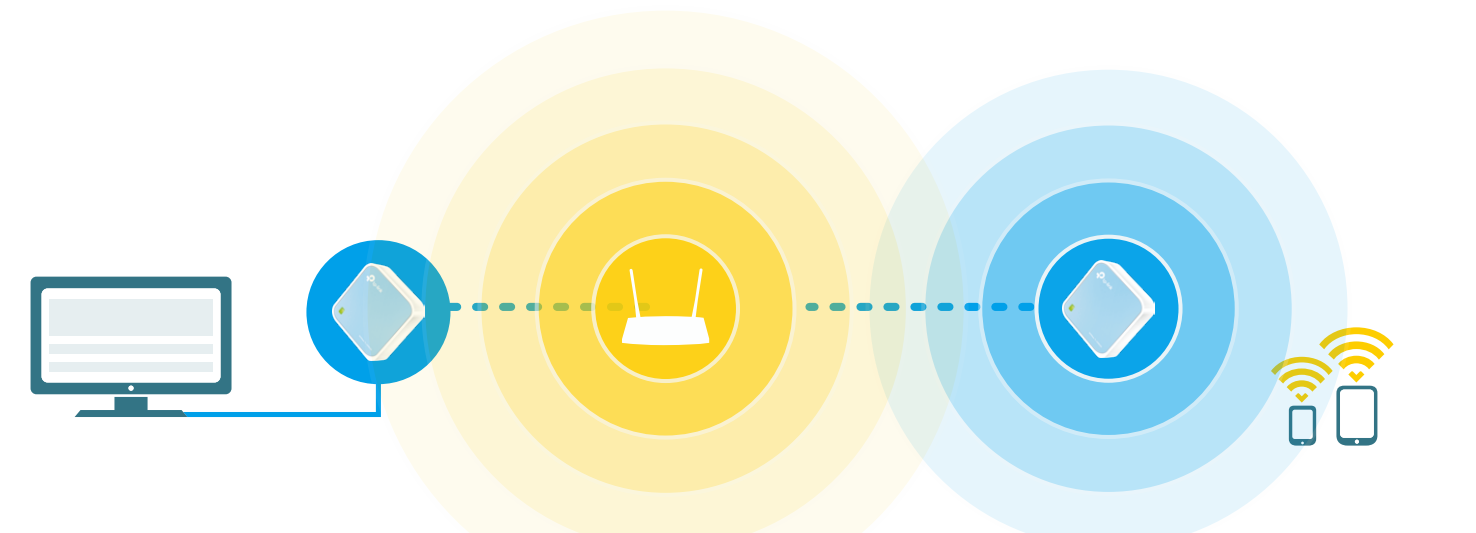
### At Home

- Range Extender Mode: expand an existing router's Wi-Fi coverage
- Client Mode: connect Ethernet devices to a Wi-Fi network
- Access Point Mode: transform a wired network to a wireless one



Router Mode or Access Point Mode

Hotspot Mode



Client Mode

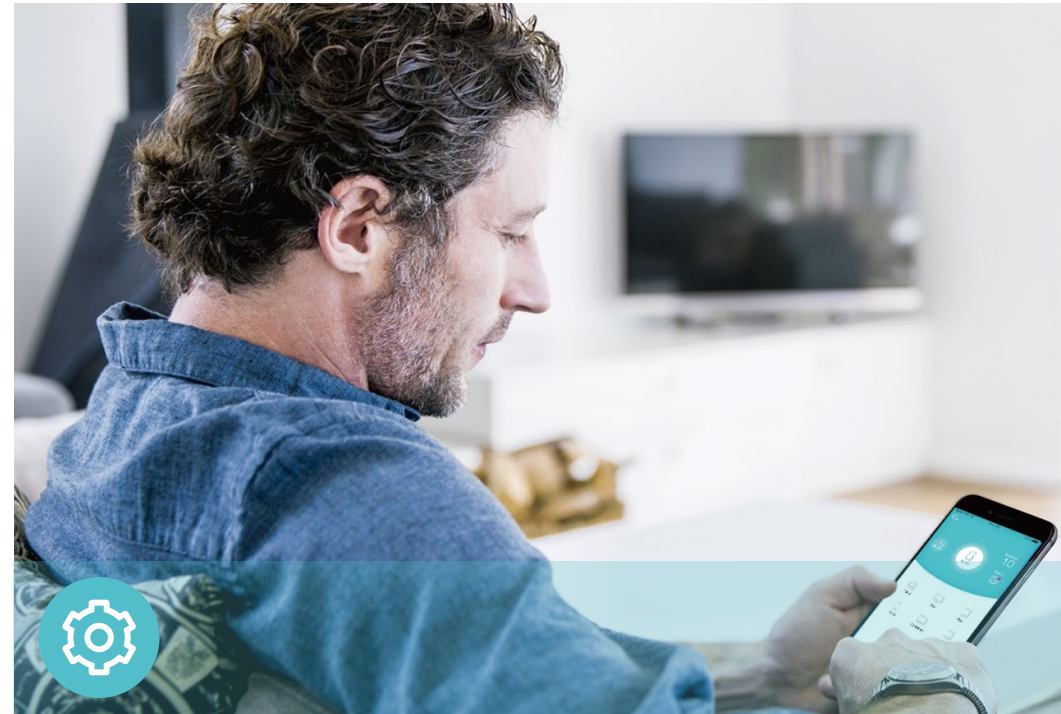
Range Extender Mode

# Features



## Reliability

- **Wireless N Speed** – 300Mbps Wi-Fi speed meets your daily internet needs
- **802.11n** – Backward compatible with 802.11b/g products
- **Easy Bandwidth Management** – Bandwidth Control allocates necessary speed of each connected device to ensure quality of multimedia streaming



## Ease of Use

- **Intuitive Web UI** – Ensures quick and simple installation without hassle
- **Pocket Size** – Ideal for home and travel use
- **Flexible Power Supply** – Powered through a micro USB port by an external power adapter or USB connection to a computer provides flexibility for any situation
- **Hassle-free Management with Tether App** – Network management is made easy with the TP-Link Tether App, available on any Android or iOS device



## Security

- **Access Control** – Establish a whitelist or blacklist to allow or block certain devices from accessing the internet
- **Parental Controls** – Manage when and how children devices can access the internet
- **Encryptions for Secure Network** – WPA-PSK/WPA2-PSK encryptions provide active protection against security threats

TP-Link 300Mbps Wireless N Nano Router TL-WR802N

# Specifications

## Hardware

- Ports: 1 10/100Mbps WAN/LAN Port, 1 Micro USB Port
- Buttons: Reset Button
- External Power Supply: 5VDC /1A
- Dimensions (W x D x H): 2.2 x 2.2 x 0.7 in. (57 x 57 x18 mm)



## Wireless

- Wireless Standards: IEEE 802.11n, IEEE 802.11g, IEEE 802.11b
- Frequency: 2.4-2.4835GHz
- Transmit Power: CE: <20dBm(2.4GHz), FCC: <30dBm
- Signal Rate:
  - 11n: Up to 300Mbps(dynamic)
  - 11g: Up to 54Mbps(dynamic)
  - 11b: Up to 11Mbps(dynamic))
- Reception Sensitivity:
  - 150M: -72dBm@10% PER
  - 72M: -75 dBm@10% PER
  - 54M: -78 dBm@10% PER
  - 6M: -92 dBm@10% PER
- Wireless Modes: Wireless Router Mode, Range Extender Mode, Client Mode, Access Point Mode, Hotspot Router Mode
- Wireless Function: Enable/Disable Wireless Radio, WMM, Wireless Statistics
- Wireless Security: WEP, WPA / WPA2, WPA-PSK / WPA2-PSK

TP-Link 300Mbps Wireless N Nano Router TL-WR802N



# Specifications

## Software

- Working Modes: Wireless Router, Range Extender, Access Point
- WAN Type: Dynamic IP, Static IP, PPPoE, PPTP, L2TP
- DHCP: Server, DHCP Client List, Address Reservation
- Quality of Service: WMM, Bandwidth Control
- Port Forwarding: Virtual Server, Port Triggering, UPnP, DMZ
- Dynamic DNS: DynDns, Comexe, NO-IP
- VPN Pass-Through: PPTP, L2TP, IPSec
- Access Control: Parental Controls, Local Management Control, Host List, Access Schedule, Rule Management
- Firewall Security: DoS, SPI Firewall, IP and MAC Address Binding
- Protocols: IPv4, IPv6
- Management: Access Control, Local Management, Remote Management
- Firewall Security: DoS, SPI Firewall, IP Address Filter/MAC Address Filter/Domain Filter, IP and MAC Address Binding

## Others

- Certification  
CE, FCC, RoHS
- System Requirements  
Microsoft Windows 10/8.1/8/7/Vista/XP/2000/NT/98SE, MAC OS, NetWare, UNIX or Linux  
Internet Explorer 11, Firefox 12.0, Chrome 20.0, Safari 4.0, or other Java-enabled browser
- Environment  
Operating Temperature: 0°C~40°C (32°F ~104°F)  
Storage Temperature: -40°C~70°C (-40°F ~158°F)  
Operating Humidity: 10%~90% non-condensing  
Storage Humidity: 5%~90% non-condensing
- Package Contents  
300Mbps Wireless N Nano Router TL-WR802N  
Quick Installation Guide  
RJ-45 Ethernet Cable  
Power Adapter  
USB Cable



For more information, please visit

<http://www.tp-link.com/en/products/details/TL-WR802N.html>

or scan the QR code left

©2017 TP-Link

\*Maximum wireless signal rates are the physical rates derived from IEEE Standard 802.11 specifications. Actual wireless data throughput and wireless coverage are not guaranteed and will vary as a result of 1) environmental factors, including building materials, physical objects, and obstacles, 2) network conditions, including local interference, volume and density of traffic, product location, network complexity, and network overhead, and 3) client limitations, including rated performance, location, connection, quality, and client condition.

[www.tp-link.com](http://www.tp-link.com)

TP-Link 300Mbps Wireless N Nano Router TL-WR802N



[www.rxtx.com.au](http://www.rxtx.com.au)