



# AC1200 Dual Band Wi-Fi Router

3in1:  
Router,  
Access Point,  
Range Extender

Archer C54



Dual-Band Wi-Fi  
867 Mbps + 300 Mbps<sup>†</sup>



Extensive Range  
with Beamforming



IPTV and 4K TV  
Supported



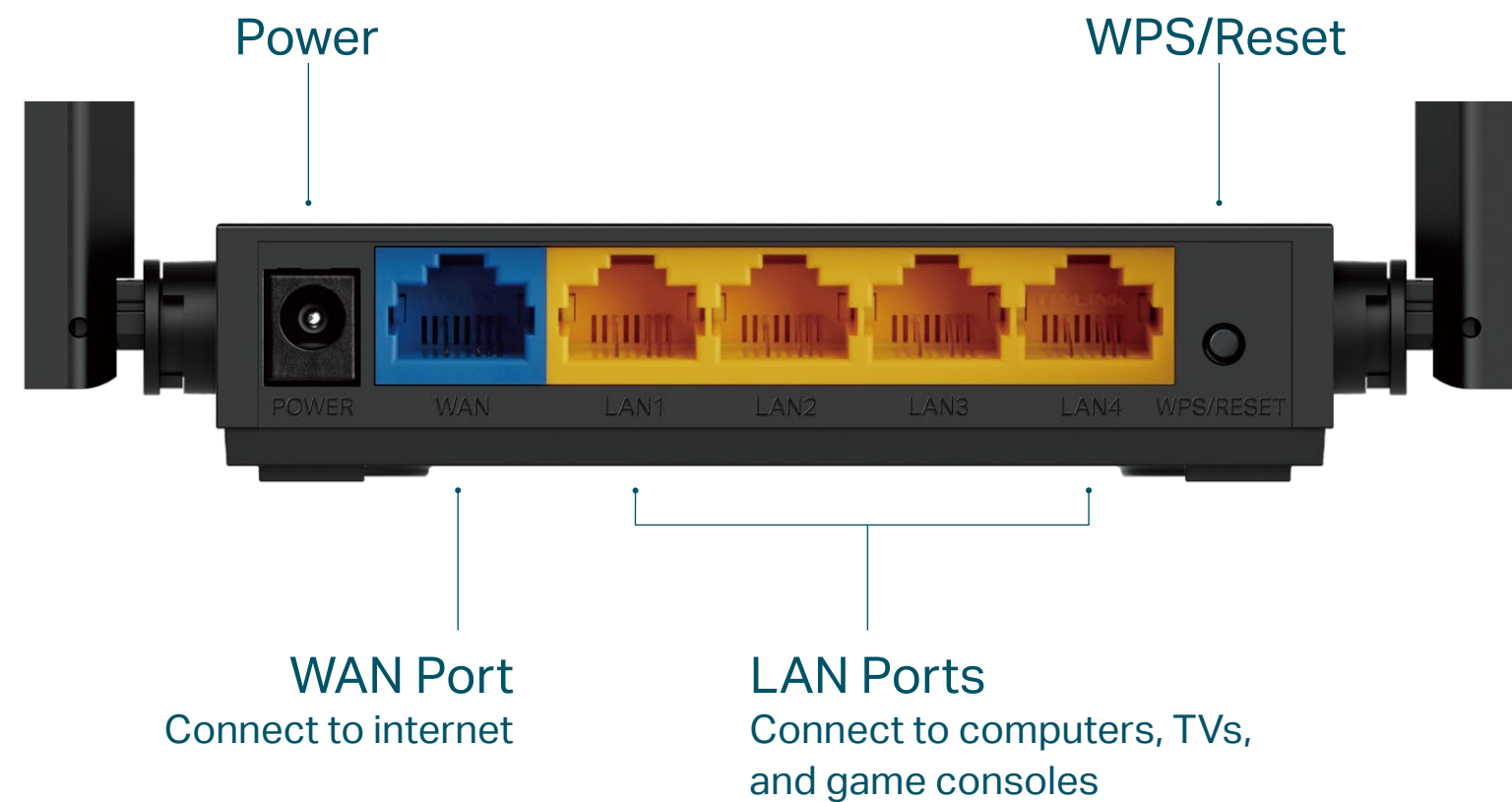
Multiple-Modes



# Highlights

## Fast Connections

Enjoy internet with the dual-band Wi-Fi and 4 fast LAN ports. Equipped with 4 omni-directional antennas, Archer C54 generates a 2.4 GHz Wi-Fi across your house and a fast 5 GHz Wi-Fi, letting the whole family enjoy reliable Wi-Fi on every device.



## 3 Modes in 1

### Router Mode (Default)

Plug in an Ethernet cable to instantly create a private wireless network and share internet access with all your Wi-Fi devices.



### Access Point Mode

Transform your existing wired network into a wireless one.



### Range Extender Mode

Boost the existing wireless coverage in your house.

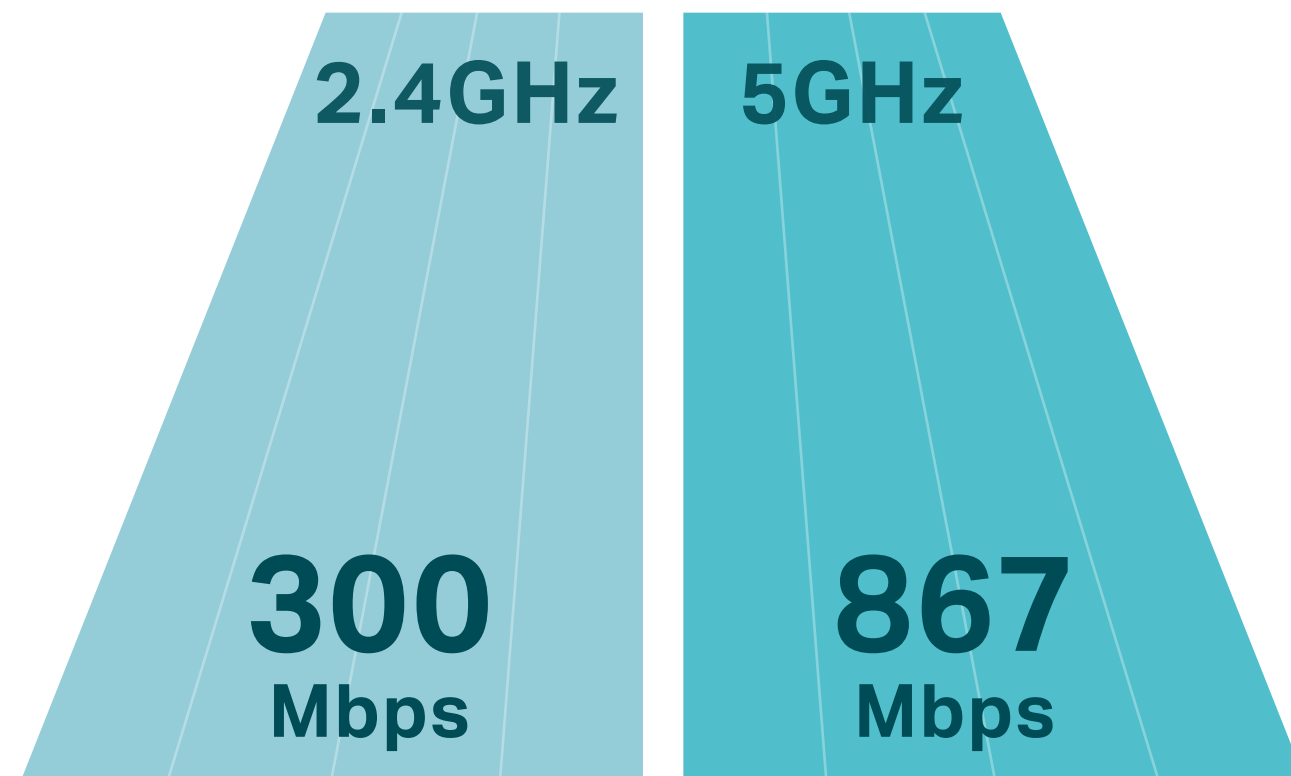


TP-Link AC1200 Dual Band Wi-Fi Router Archer C54

# Highlights

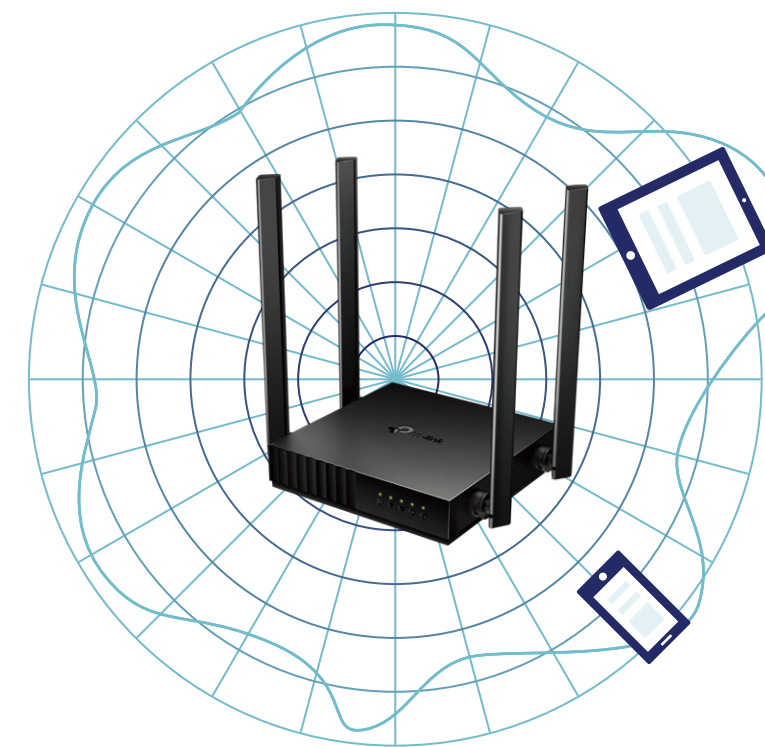
## Wi-Fi Speeds Ideal for 4K

867 Mbps on 5 GHz and 300 Mbps on 2.4 GHz are ideal for both everyday tasks and 4K streaming without buffering.†

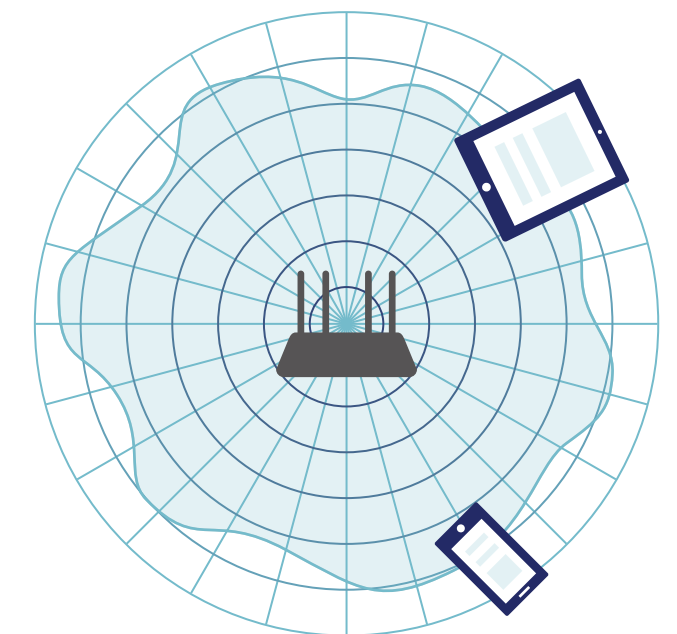


## Beamforming

Beamforming detect the location of your connected devices and concentrates signals towards them to optimize wireless connections.



Archer C54



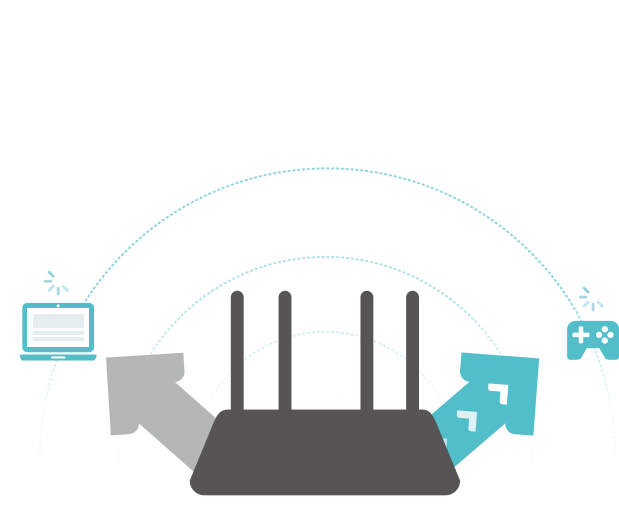
Regular Router

TP-Link AC1200 Dual Band Wi-Fi Router Archer C54

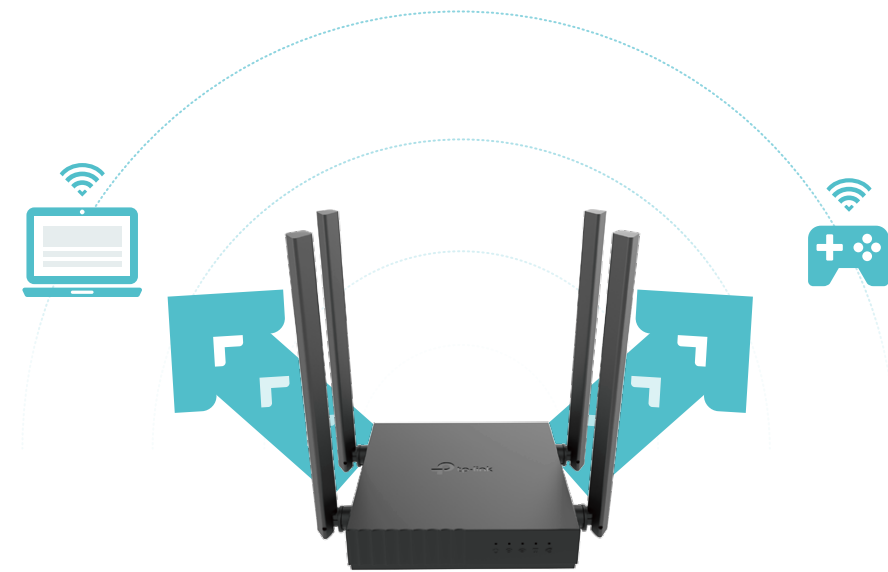
# Highlights

## MU-MIMO

MU-MIMO technology serves multiple devices at once, reducing wait time, and making each stream more efficient.†



**Traditional Router**



**MU-MIMO Router**

## Versatile Management

Block inappropriate content and set daily limits for the total time children/staff spend online through Parental Controls. Guest Network creates a separate access point for guests, to ensure your privacy is secure.



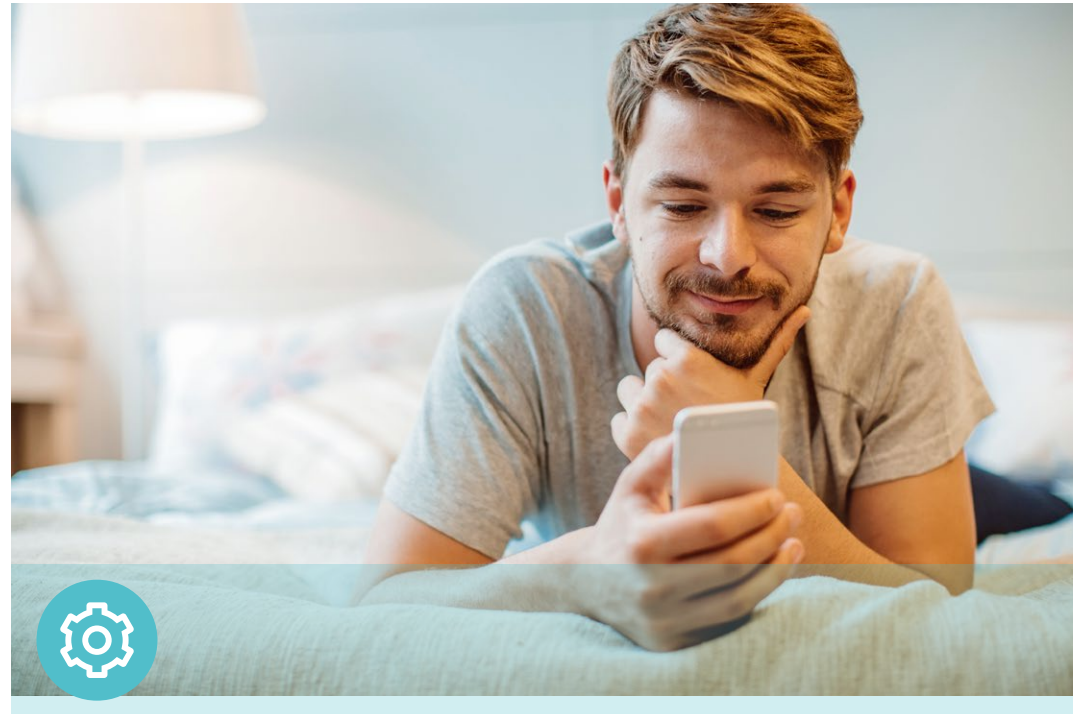
**Parental Controls**

**Guest Network**

TP-Link AC1200 Dual Band Wi-Fi Router Archer C54



# Features



## Ease of Use

- WPS – Make secure wireless connection quick and easy with the push of a button
- Compact and Mountable – Designed to conserve space and complement any décor.
- Intuitive Web UI – Ensure quick and simple installation without hassle
- Hassle-free Management with Tether App – Network management is made easy with the TP-Link Tether App, available on any Android or iOS device



## Reliability

- Ultimate Wireless Speed – 300 Mbps on 2.4 GHz and 867 Mbps on 5 GHz Wi-Fi speed for lag-free work
- 802.11ac – Backward compatible with 802.11b/g/n products
- IPTV – Support IGMP Proxy/Snooping, Bridge and Tag VLAN to optimize IPTV streaming
- QoS– Advanced QoS makes it easier for you to manage the bandwidth of connected devices
- IPV6 – Supports IPV6 to work with more ISPs



## Security

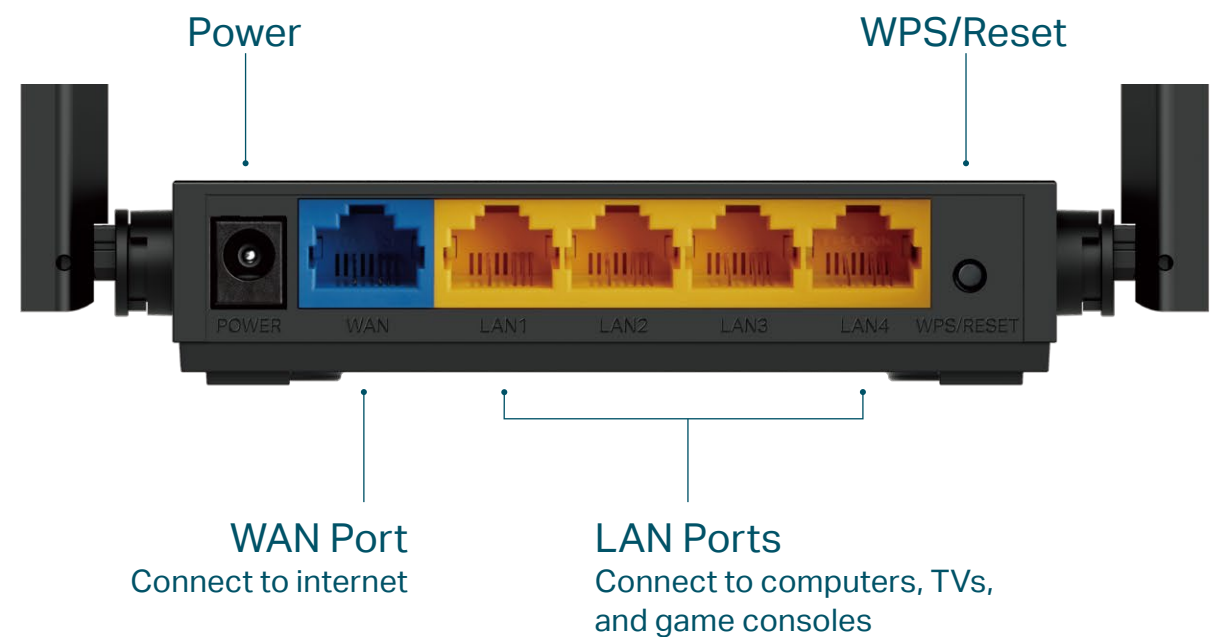
- Guest Network – Provide separate access for guests while securing the home network
- Access Control – Establish a whitelist or blacklist to allow or block certain devices from accessing the internet
- Parental Controls – Manage when and how connected devices can access the internet
- Encryptions for Secure Network – WPA-PSK/WPA2-PSK encryptions provide active protection against security threats

TP-Link AC1200 Dual Band Wi-Fi Router Archer C54

# Specifications

## Hardware

- Ethernet Ports: 4 x 10/100Mbps LAN Ports, 1 x 10/100Mbps WAN Port
- Buttons: Reset/WPS Button
- Antennas: 4 Fixed Omni Directional Antennas
- External Power Supply: 9VDC/0.85A
- Dimensions (W x D x H): 4.5x4.2x1.0 in. (115x106.7x24.3 mm)



## Wireless

- Wireless Standards: IEEE 802.11ac/n/a 5GHz, IEEE 802.11b/g/n 2.4GHz
- Frequency: 2.4GHz and 5GHz
- Signal Rate:
  - 5 GHz: Up to 867 Mbps
  - 2.4 GHz: Up to 300 Mbps
- Reception Sensitivity:
  - 5GHz:
    - 11a 54M: -76dBm; 11ac VHT20 MCS8: -70dBm;
    - 11ac VHT40 MCS9: -65.5dBm; 11ac VHT80 MCS9: -61.5dBm
  - 2.4GHz:
    - 11g 54M: -76dBm; 11n; HT20 MCS7: -74dBm;
    - 11n HT40 MCS7: -71dBm
- Wireless Function: Enable/Disable Wireless Radio, WMM
- Wireless Security: 64/128-bit WEP, WPA / WPA2, WPA-PSK / WPA2-PSK encryption

# Specifications

## Software

- Operation Modes: Wireless Router, Range Extender, Access Point
- WAN Type: Dynamic IP, Static IP, PPPoE, PPTP(Dual Access), L2TP(Dual Access)
- DHCP: DHCP Server, DHCP Client List, Address Reservation
- Quality of Service: WMM, Bandwidth Control
- NAT Forwarding: Port Forwarding, Port Triggering, UPnP, DMZ
- Dynamic DNS: DynDns, NO-IP
- Firewall Security: SPI Firewall, IP and MAC Address Binding
- Protocols: IPv4, IPv6
- Management: Parental Controls, Access Control, Local Management, Remote Management
- Guest Network: 2.4 GHz Guest Network, 5 GHz Guest Network

## Others

- Certification  
FCC, CE, RoHS
- Requirements  
Microsoft Windows 10/8.1/8/7/Vista/XP/2000/NT/98SE, MAC OS, NetWare, UNIX or Linux  
Internet Explorer 11, Firefox 12.0, Chrome 20.0, Safari 4.0, or other Java-enabled browser  
Cable or DSL Modem  
Subscription with an Internet Service Provider (for internet access)
- Environment  
Operating Temperature: 0°C~40°C (32°F ~104°F)  
Storage Temperature: -40°C~60°C (-40°F ~140°F)  
Operating Humidity: 10%~90% non-condensing  
Storage Humidity: 5%~90% non-condensing
- Package Contents  
Wireless Router Archer C54  
Power Adapter  
RJ-45 Ethernet Cable  
Quick Installation Guide



For more information, please visit

[https://www.tp-link.com/products/details/?model=Archer+C54\\_V1](https://www.tp-link.com/products/details/?model=Archer+C54_V1)

or scan the QR code left

Specifications are subject to change without notice. TP-Link is a registered trademark of TP-Link Technologies Co., Ltd. Other brands and product names are trademarks or registered trademarks of their respective holders. No part of the specifications may be reproduced in any form or by any means or used to make any derivative such as translation, transformation, or adaptation without permission from TP-Link Technologies Co., Ltd. Copyright ©2020 TP-Link Technologies Co., Ltd. All rights reserved.

\*Maximum wireless signal rates are the physical rates derived from IEEE Standard 802.11 specifications. Actual wireless data throughput and wireless coverage are not guaranteed and will vary as a result of network conditions, client limitations, and environmental factors, including building materials, obstacles, volume and density of traffic, and client location.

[www.tp-link.com](http://www.tp-link.com)

TP-Link AC1200 Dual Band Wi-Fi Router Archer C54