

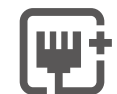


AC2100 Wireless MU-MIMO VDSL/ADSL Telephony Modem Router

AC2100 Wi-Fi and Beamforming
for a Complete Home Network



Archer VR2100v



Super VDSL Up to 350
Mbps VDSL Access



1733 Mbps + 300 Mbps
AC2100 Dual Band Wi-Fi



MU-MIMO for
Higher Efficiency



Full Gigabit Ports



USB 3.0 Port
Rapidly Media Sharing

Highlights

Smart and Convenient Telephony

Make landline calls through two phone ports, enabling connection of up to 2 analog phones. With 256MB internal storage, Archer VR2100v can records over 300+ minutes of voicemail.



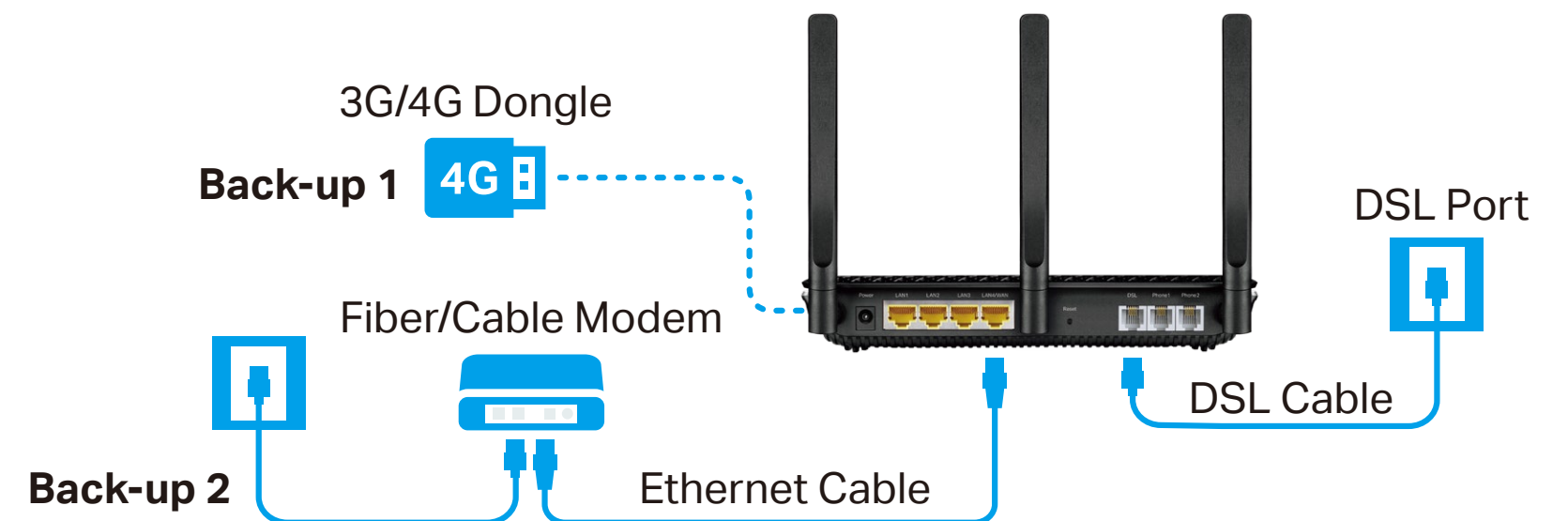
300 minutes of voice-mail storage



Up to 2 analog tele-phones

Versatile Connectivity

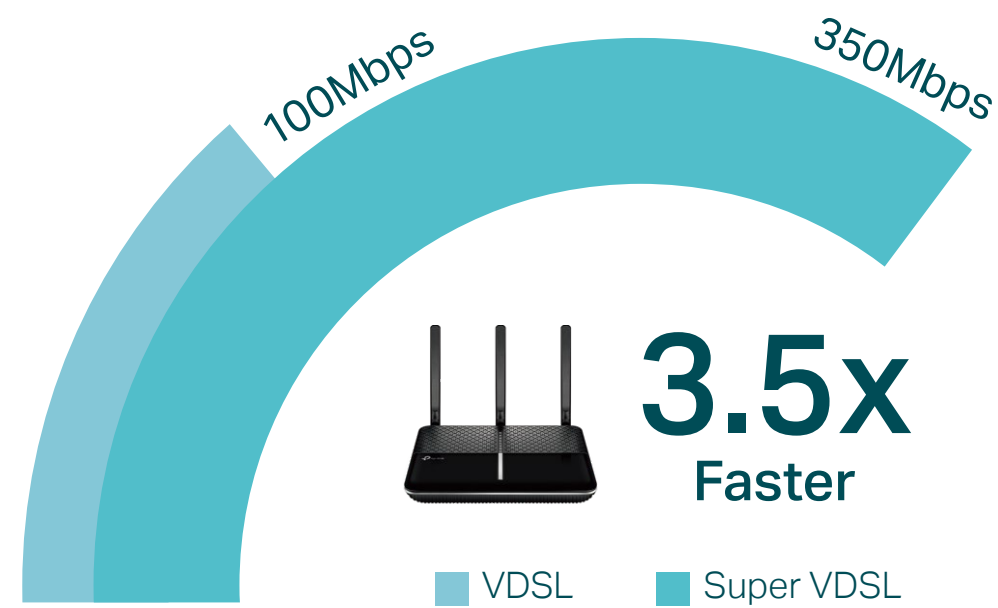
As a powerful DSL modem router, the Archer VR2100v supports super fast VDSL broadband of up to 350 Mbps, as well a variety of other connection types. The LAN/WAN port accepts connections from Cable Modem or Fiber Modem, and the USB 3.0 port supports 3G/4G dongle connections for a perfect main or backup internet connection.



Highlights

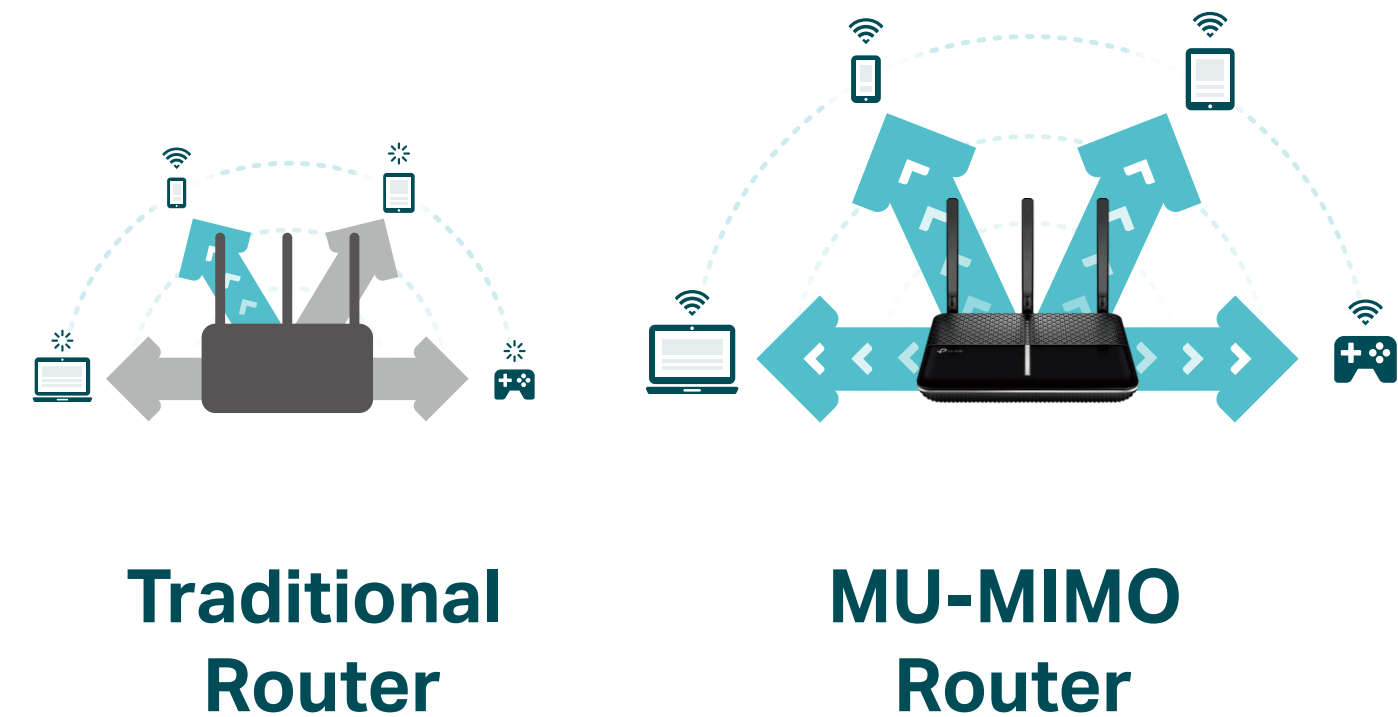
Super VDSL Technology

Super VDSL (VDSL2 Profile 35b) is the next generation of VDSL technology with download speeds up to 350 Mbps. The Archer VR2100v is also backward compatible with the VDSL /ADSL standard and always provides the highest possible speed.



MU-MIMO: Efficient Wi-Fi for Every Device

MU-MIMO technology serves up to four devices at once, reducing wait time, increasing Wi-Fi throughput for every device, and making each stream more efficient.

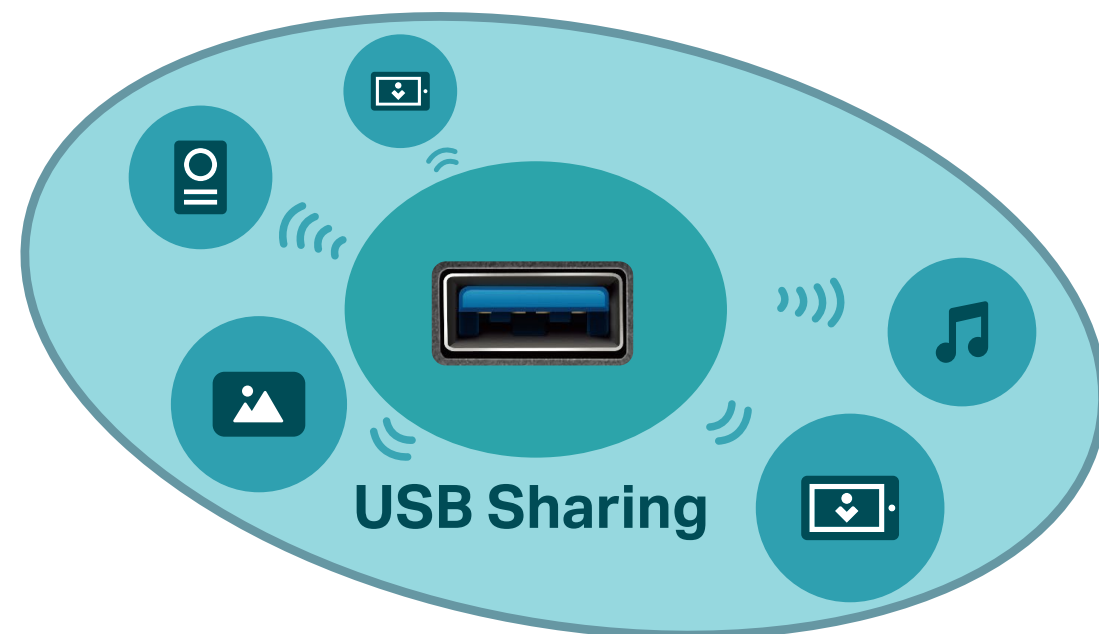


TP-Link AC2100 Wireless MU-MIMO VDSL/ADSL Telephony Modem Router Archer VR2100v

Highlights

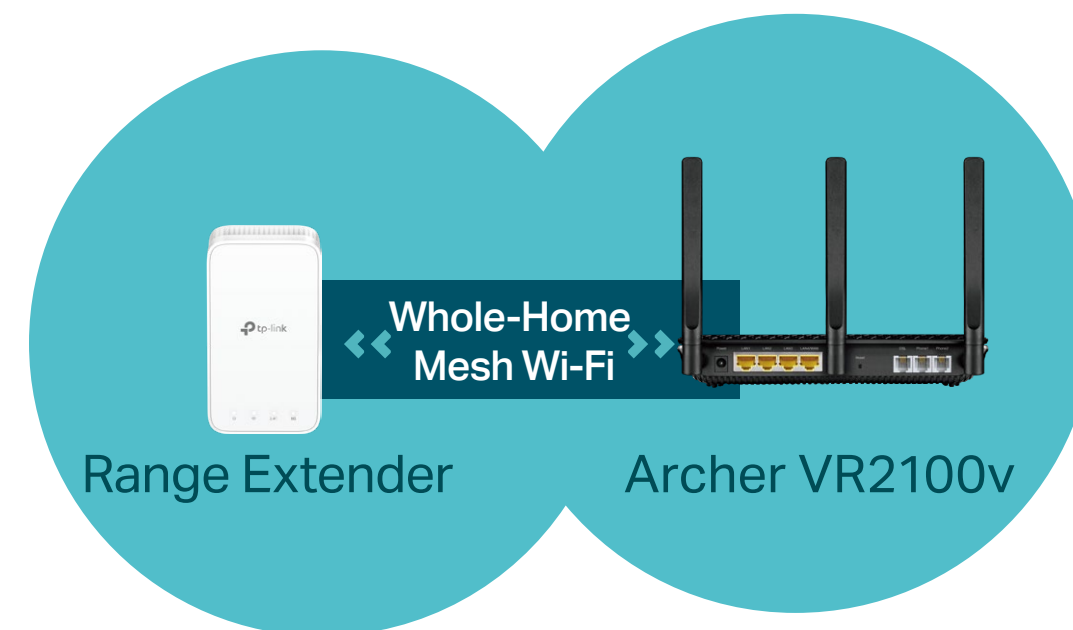
Media Sharing

One USB 3.0 port provides data transfers up to 10× faster than a traditional USB 2.0 port. Connect external storage devices and share files, photos, and videos at high-speed.



Support TP-Link OneMesh™

Co-work with TP-Link OneMesh products, to provide a more flexible and cost-effective Mesh network with a single Wi-Fi name for seamless whole-home coverage.



TP-Link AC2100 Wireless MU-MIMO VDSL/ADSL Telephony Modem Router Archer VR2100v

Features



Speed

- Ultimate Wireless Speed – Combined wireless speeds of up to 300 Mbps (over 2.4GHz) and 1733 Mbps (over 5GHz)
- 802.11 ac – Provides a data transfer rate 3 times faster than 802.11n for each stream



Telephony

- Integrated Answering Machine – Stores 300 minutes long voice messages internally on the modem router or stores the voice messages externally on the USB storage device
- Numerous Telephony Functions – Internal calls, three-way conference, call list, speed dial, call blocking and call rules
- Support CAT-iq 2.0 – Provides telephone book, call list and full compatibility with CAT-iq phones

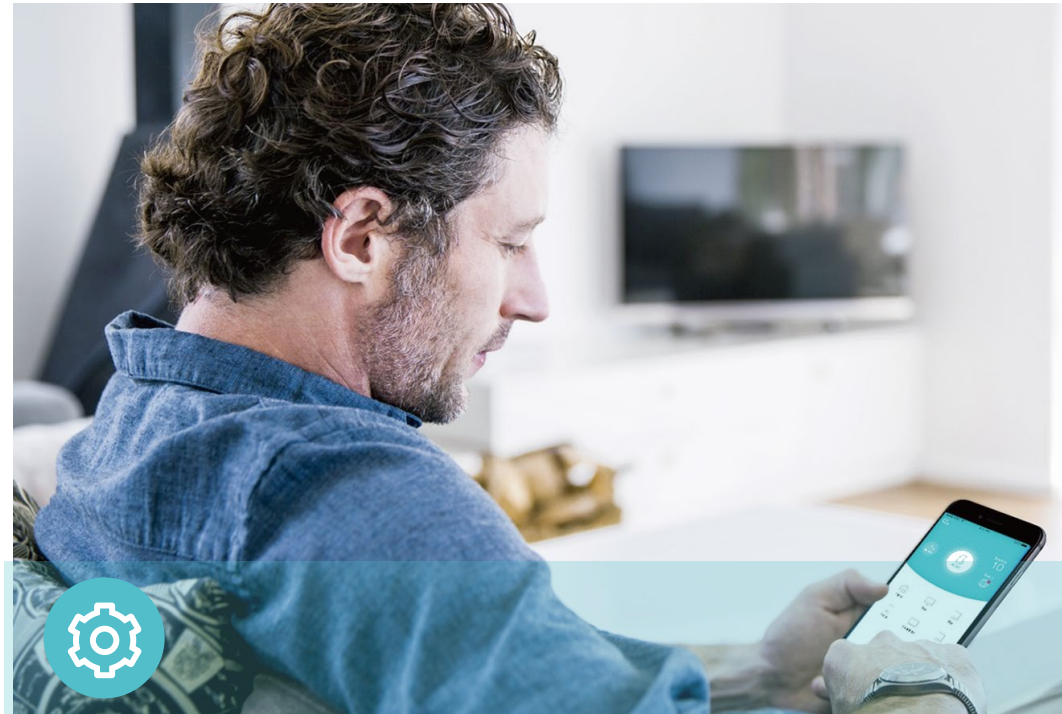


Reliability

- Simultaneous Dual Band – Separate Wi-Fi bands enable more devices to connect to your network without a drop in performance
- Ultimate Range Wi-Fi – 4 dual band detachable antennas ensure widespread Wi-Fi coverage and a stable connection

TP-Link AC2100 Wireless MU-MIMO VDSL/ADSL Telephony Modem Router Archer VR2100v

Features



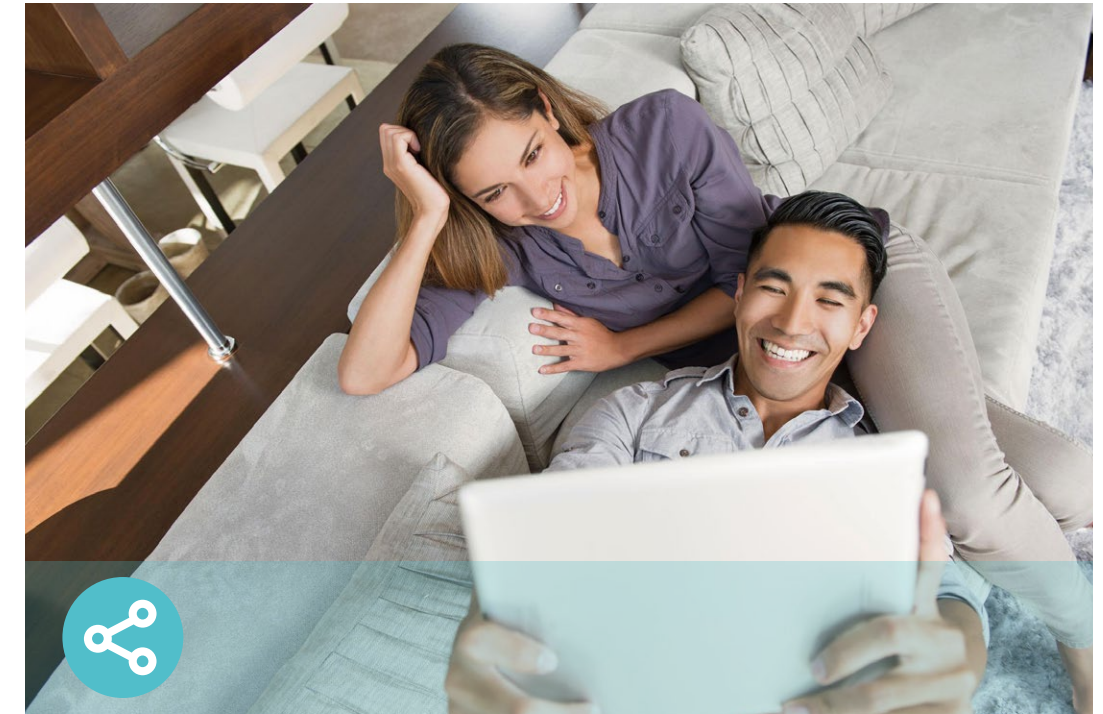
Ease of Use

- Intuitive Web UI – Ensures quick and simple installation without hassle
- Easy On/Off – Turn On/Off power, wireless radio and LEDs separately using the Power On/Off, WLAN and LED On/Off buttons
- Remote Management with TP-Link ID – Manage your home network from your smartphone or tablet via a single TP-Link ID, no matter where you find yourself
- Hassle-free Management with Tether App – Network management is made easy with the TP-Link Tether App, available on any Android or iOS device
- Online Upgrade – Keeps you informed of the latest firmware and allows online updating



Security

- Guest Network – Keep your main network secure by creating a separate network for friends and visitors
- Access Control – Establish a whitelist or blacklist to allow or block certain devices from accessing the internet
- Parental Controls – Manage when and how connected devices can access the internet
- VPN Server – OpenVPN, PPTP VPN and IPSec VPN are supported, making it easy to set up a secure connection between your private network and the internet
- Encryptions for Secure Network – WPA-PSK/WPA2- PSK encryptions provide active protection against security threats



Easy Sharing

- USB Port for Fast Sharing – With a USB port, you can access and share your files and media locally. Through the modem router's FTP / HTTPS server, you can also access your files and media from network devices remotely
- Built-in Media Server – Allows you to play music, watch videos and view photos from any device on your network

TP-Link AC2100 Wireless MU-MIMO VDSL/ADSL Telephony Modem Router Archer VR2100v

Specifications

Hardware

- Ethernet Ports: 1 10/100/1000Mbit/s RJ45 WAN/LAN Port, 3 10/100/1000Mbit/s RJ45 LAN Ports, 3 RJ11 Ports (DSL, Phone1/2), 1 USB 3.0 Port
- Button: WPS, Wi-Fi On/Off , Reset, LED, Power On/Off,
- External Power Supply: 12V/2A
- Dimensions (L × B × H): 216 × 163.7 × 36.8 mm
- IEEE Standards: IEEE 802.3, IEEE 802.3u, 802.3ab
- VDSL2 Standards: ITU-T G.993.2, ITU-T G.993.5 (G.vector), ITU-T G.998.4 (G.INP)
- ADSL2+Standards: ITU-T G.992.5(Annex A/L/M)
- ADSL2 Standards: ITU-T G.992.3 (G.DMT.bis), ITU-T G.992.4 (G.lite.bis)
- ADSL Standards: Full-rate-ANSI T1.413 Issue 2, ITU-T G.992.1 (G.DMT), ITU-T G.992.2 (G.Lite), ITU-T G.994.1 (G.hs), ITU-T G.995.11
- Antenna: 3 external antennas + 1 Internal antenna

Wireless

- Wireless Standards: IEEE 802.11ac/n/a 5GHz, IEEE 802.11b/g/n 2.4GHz
- Frequency: 2.4GHz and 5GHz
- Signal Rate: 1733Mbps at 5GHz, 300Mbps at 2.4GHz
- Transmit Power: <20dBm (2.4GHz), <23dBm (5GHz)
- Wireless Function: Enable/Disable Wireless Radio, WDS Bridge, WMM, Wireless Statistics
- Wireless Security: 64/128-bit WEP, WPA/WPA2, WPA-PSK/WPA-PSK2 encryptions
- Wireless Schedule: Supports 2.4GHz and 5GHz Wireless Schedule

Telephony

- VoIP Standards: SIP(RFC3261)/RTP(RFC1889/3550), G.711A/u, G.722, G.729AB, G.726
- Integrated Answering Machine: Stores 300 minutes long voice messages internally on the modem router or store voice messages externally on USB storage devices
- Advanced Telephone Functions: Call Forwarding, Call Transfer, Call Back on Busy, Call Blocking, Anonymous Call Blocks, Speed Dial, Emergency Number
- tpPhone: Make internet calls via smartphones or tablets



USB Port Wi-Fi WPS Power On/Off



Power 3 LAN Ports Reset DSL Phone Port

TP-Link AC2100 Wireless MU-MIMO VDSL/ADSL Telephony Modem Router Archer VR2100v

Specifications

Software

- Operation Modes: VDSL/ADSL Modem Router, Wireless Router
- DHCP: Server, Client, DHCP Client List, Address Reservation, DHCP Relay
- Port Forwarding: Virtual Server, Port Triggering, DMZ, ALG, UPnP
- Dynamic DNS: TP-Link / DynDNS / noip
- VPN: OpenVPN, PPTP VPN, IPsec VPN
- ATM/PPP Protocols: ATM Forum UNI3.1/4.0, PPP over ATM (RFC 2364), PPP over Ethernet (RFC2516), IPoA (RFC1577/2225), MERIPoE (RFC 1483 Routed), Bridge (RFC1483 Bridge), PVC – Up to 8 PVCs
- Security: NAT Firewall, SPI Firewall, Access Control, Service Filtering, Denial of Service (DoS), SYN Flooding, Ping of Death, IP and MAC Address Binding
- Advanced Functions: IPTV, Parental Controls, Network Address Translation (NAT), Port Mapping (Grouping), Static Routing, RIP v1/v2 (optional), DNS Relay, DDNS, IGMP V1/V2/V3
- USB Sharing: Support Samba (Storage) / FTP Server / Media Server / 3G/4G Modem / SFTP Server / Web Storage
- Management: Web Based Configuration (HTTP / HTTPS), Remote management, Command Line Interface, SSL for TR-069, SNMP v1/2c, Firmware Upgrade, Diagnostic Tools, Free Online Firmware Update
- Guest Network: 2.4GHz guest network, 5GHz guest network
- IPsec VPN: Support up to 10 IPsec VPN tunnels
- Protocols: Support IPv4 and IPv6



For more information, please visit

<http://www.tp-link.com/en/products/details/Archer-VR2100v.html>

or scan the QR code left

*Maximum wireless signal rates are the physical rates derived from IEEE Standard 802.11 specifications. Actual wireless data throughput and wireless coverage, and quantity of connected devices are not guaranteed and will vary as a result of network conditions, client limitations, and environmental factors, including building materials, obstacles, volume and density of traffic, and client location.

*Use of MU-MIMO requires clients to also support MU-MIMO.

©2022 TP-Link

Others

- Certification: CE, RoHS
- System Requirements:
Microsoft Windows 98SE, NT, 2000, XP, Vista™ or Windows 7, 8, 8.1, 10,
Mac OS, NetWare, UNIX or Linux

Internet Explorer 11, Firefox 12.0, Chrome 20.0, Safari 4.0, or other
Java-enabled browser
- Environment
Operating Temperature: 0°C ~40°C (32°F ~104°F)
Operating Humidity: 10%~90% nicht kondensierend
- Package Contents
AC2100 Wireless MU-MIMO VDSL/ADSL Telephony Modem Router
RJ11 Cable
RJ45 Ethernet Cable
Power Adapter
Quick Installation Guide
Telephony Feature Guide

www.tp-link.com

TP-Link AC2100 Wireless MU-MIMO VDSL/ADSL Telephony Modem Router Archer VR2100v



www.rxtx.com.au