



300Mbps Wireless N Router

N300 Router with Access Point Mode

TL-WR841N



300Mbps
Wireless Speed



5dBi Antennas



IPTV

Highlights

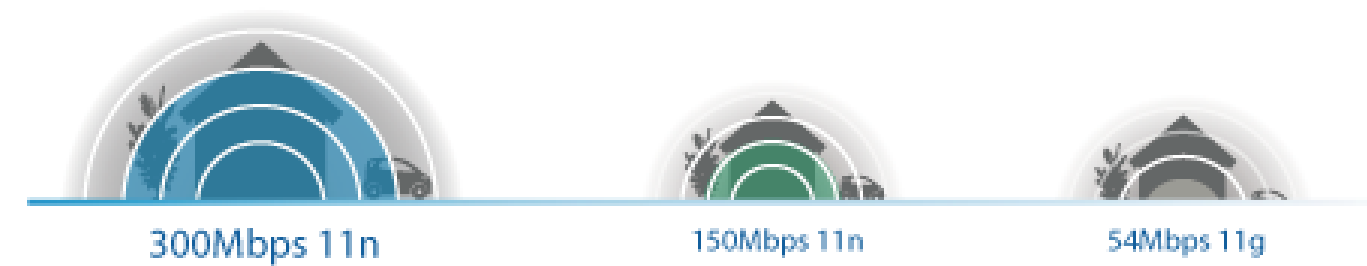
Reliable Network Connection

Equipped with two 5dBi antennas, the TL-WR841N can enhance wireless signal transmission and reception. With the 4 fast Ethernet ports, it provides reliable Wi-Fi and wired connection for medium-sized homes, letting your family enjoy fast Wi-Fi together on every smartphone, tablet and laptop.



Wireless N Speed & Range

Complying with the IEEE 802.11n standard, TL-WR841N can establish a wireless network and get up to 15X the speed and 5X the range of conventional 11g products. Its 300Mbps Wi-Fi speed meets your daily internet needs.

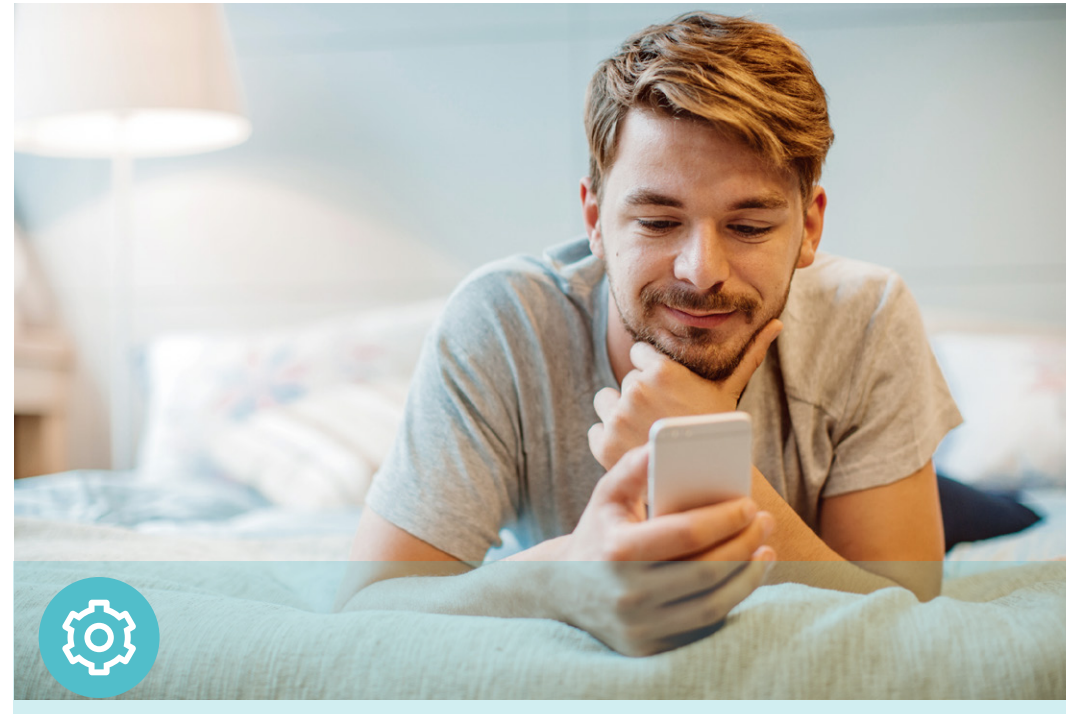


Features



Reliability

- **Wireless N Speed** – 300Mbps Wi-Fi speed meets your daily internet needs
- **802.11n** – Backward compatible with 802.11b/g products
- **Easy Bandwidth Management** – Bandwidth Control allocates necessary speed of each connected device to ensure quality of multimedia streaming
- **Access Control** – Establish a whitelist or blacklist to allow or block certain devices from accessing the internet



Ease of Use

- **Intuitive Web UI**– Ensures quick and simple installation without hassle
- **Fast Encryption** – One-touch wireless security encryption with the WPS button
- **Hassle-free Management with Tether App** – Network management is made easy with the TP-Link Tether App, available on any Android or iOS device
- **Parental Controls** – Manage when and how children devices can access the internet



Multi-mode

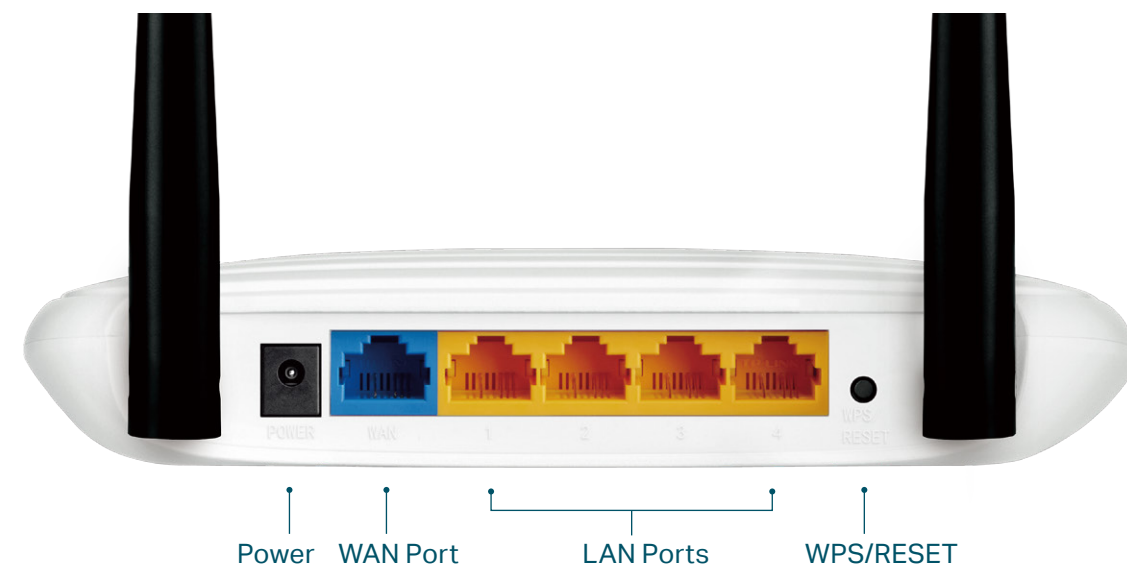
- **Wireless Router Mode** – Create a strong Wi-Fi network and share internet to multiple Wi-Fi devices
- **Access Point Mode** – Transform your existing wired network to a wireless one
- **Range Extender Mode** – Boost the existing wireless coverage in your home
- **WISP Mode** – Connect to the ISP network wirelessly in areas without wired service

TP-Link 300Mbps Wireless N Router TL-WR841N

Specifications

Hardware

- Ethernet Ports: 4 × 10/100Mbps LAN Ports, 1 × 10/100Mbps WAN Port
- Button: WPS/RESET Button
- Antennas: 2 Fixed Omni Directional Antennas
- External Power Supply: 9VDC / 0.6A
- Dimensions (W x D x H): 6.9 x 4.6 x 1.3 in. (173 x 118 x 33mm)



Wireless

- Wireless Standards: IEEE 802.11n, IEEE 802.11g, IEEE 802.11b
- Frequency: 2.412~2.472GHz
- Signal Rate:
 - 11n: Up to 300Mbps(dynamic)
 - 11g: Up to 54Mbps(dynamic)
 - 11b: Up to 11Mbps(dynamic)
- Reception Sensitivity:
 - 270M: -70dBm@10% PER
 - 130M: -74dBm@10% PER
 - 108M: -74dBm@10% PER
 - 54M: -77dBm@10% PER
 - 11M: -87dBm@8% PER
 - 6M: -90dBm@10% PER
 - 1M: -98dBm@8% PER
- Wireless Function: Enable/Disable Wireless Radio, WMM, Wireless Statistics
- Wireless Security: WEP, WPA/WPA2, WPA-PSK/WPA2-PSK

TP-Link 300Mbps Wireless N Router TL-WR841N

Specifications

Software

- Working Modes: Wireless Router, Range Extender, Access Point, WISP
- WAN Type: Dynamic IP, Static IP, PPPoE, PPTP(Dual Access), L2TP(Dual Access), Bigpond
- DHCP: Server, DHCP Client List, Address Reservation
- Quality of Service: WMM, Bandwidth Control
- Port Forwarding: Virtual Server, Port Triggering, UPnP, DMZ
- Dynamic DNS: DynDns, Comexe, NO-IP
- Access Control: Parental Controls, Local Management Control, Host list, Access Schedule, Rule Management
- Firewall Security: DoS, SPI Firewall, IP and MAC Address Binding
- Protocols: IPv4, IPv6
- Management: Access Control, Local Management, Remote Management
- Guest Network: 2.4GHz Guest Network

Others

- Certification
CE, FCC, RoHS
- System Requirements
Microsoft Windows 10/8.1/8/7/Vista/XP/2000/NT/98SE, MAC OS, NetWare, UNIX or Linux
Internet Explorer 11, Firefox 12.0, Chrome 20.0, Safari 4.0, or other Java-enabled browser
Cable or DSL Modem
Subscription with an internet service provider (for internet access)
- Environment
Operating Temperature: 0°C~40°C (32°F ~104°F)
Storage Temperature: -40°C~70°C (-40°F ~158°F)
Operating Humidity: 10%~90% non-condensing
Storage Humidity: 5%~90% non-condensing
- Package Contents
Wireless Router TL-WR841N
Power Adapter
RJ45 Ethernet Cable
Quick Installation Guide



For more information, please visit

<http://www.tp-link.com/en/products/details/TL-WR841N.html>

or scan the QR code left

Specifications are subject to change without notice. TP-Link is a registered trademark of TP-Link Technologies Co., Ltd. Other brands and product names are trademarks or registered trademarks of their respective holders. Copyright ©2018 TP-Link Technologies Co., Ltd. All rights reserved.

TP-Link Technologies Co., Ltd.
Building 24 (floors 1, 3, 4, 5) and 28 (floors 1-4) Central Science and Technology Park, Shennan Rd, Nanshan, Shenzhen, China
www.tp-link.com

www.tp-link.com

TP-Link 300Mbps Wireless N Router TL-WR841N



www.rxtx.com.au